

VERTICAL BLINDS HANGING INSTRUCTION

RECOMMENDED TOOLS



Measurement
tape



Pencil



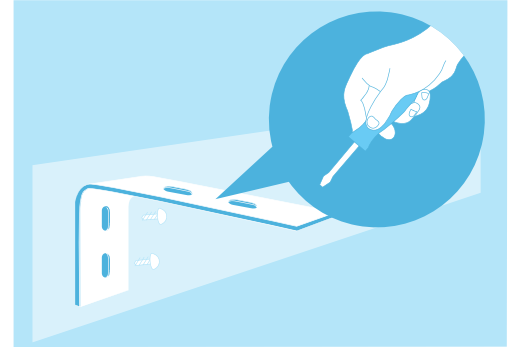
Screwdriver



Drill

PREPARATION

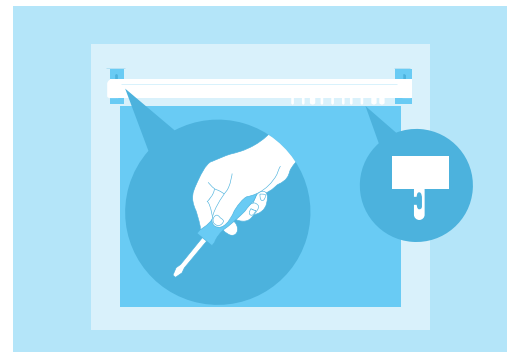
First check you've got all the fittings that come with your vertical blind. Your brackets are packed separately in the box. Please ensure you've located them before disposing of the packaging. The brackets are a universal type that can be used to top fix the blind into recesses or face fix into a frame or wall. Please read the following instructions carefully before you start fitting your blind.



HANGING

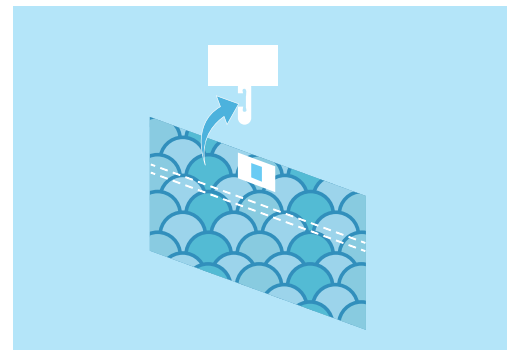
Step 1. Mount the brackets on the window frame or wall.

Measure the points where your brackets will be screwed on either side. Ensure the brackets are positioned a suitable distance away from any window handles or obstructions to allow the blind to operate smoothly. Hold the bracket in place and pre-drill the screw holes. Then use the impact driver to screw the brackets in.

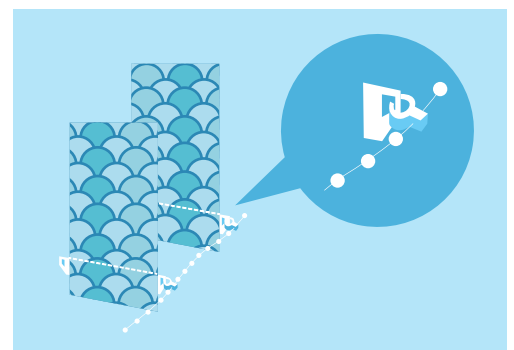


Step 2. Pull the chain to rotate the openings in the stems so they face you.

Attach the first vane by gently sliding it up into the plastic stem until it snaps into place. Repeat until all vanes are attached. To complete your installation, install the safety bracket to keep the cord fairly tight.



Finish by testing your new blinds. Carefully pull down on the cord to slowly open your blinds, then pull the cord to completely close them.



Step 3. Enjoy your new vertical blinds.

Once you've installed your vertical blind, make sure it works smoothly, sit back and enjoy your new blinds!



Decoshaker